

DRAFT as of 2/8/18

Demographic Characteristics

Population Trends

The Town of North East has experienced modest population growth over the last several decades, adding a total of 301 residents between 1970 and 2010 (Table 1). Most of the growth has taken place outside the Village of Millerton, which made up 38% of the Town’s population in 1970 but accounted for less than a third in 2010. Based on data from ESRI Business Analyst, a leading national provider of market information, the Town is projected to grow by 4.3% during the five years between 2017 and 2022, as compared to an estimated 8.7% increase for the seven years between 2010 and 2017.

	Town of North East		Village of Millerton		Dutchess County	
	Number	% Change	Number	% Change	Number	% Change
1970	2,730	--	1,042	--	223,602	--
1980	2,877	5.4%	1,013	-2.8%	245,055	9.6%
1990	2,918	1.4%	884	-12.7%	259,462	5.9%
2000	3,002	2.9%	925	4.6%	280,150	8.0%
2010	3,031	1.0%	958	3.6%	297,488	6.2%
2017 estimates	3,294	8.7%	963	0.5%	301,774	1.4%
2022 projections	3,437	4.3%	967	0.4%	305,386	1.2%

Source: U.S. Census Bureau and ESRI Business Analyst (estimates and projections).

Table 2 compares population trends in the Town of North East and Village of Millerton with those in neighboring towns. Over the last four decades, the rate of population growth in North East has been moderate relative to most other jurisdictions.

	North East town	Millerton village	Pine Plains town	Stanford town	Amenia town	Ancram town	Salisbury town (CT)	Sharon town (CT)
1970	2,730	1,042	1,792	2,479	7,842	1,215	3,573	2,491
1980	2,877	1,013	2,199	3,319	6,299	1,332	3,896	2,623
1990	2,918	884	2,287	3,495	5,195	1,510	4,090	2,928
2000	3,002	925	2,549	3,533	4,122	1,518	3,977	2,968
2010	3,031	958	2,473	3,823	4,432	1,573	3,741	2,782
% change, 1970-2010	11.0%	-8.1%	38.0%	54.2%	-45.6%*	29.5%	4.7%	11.7%

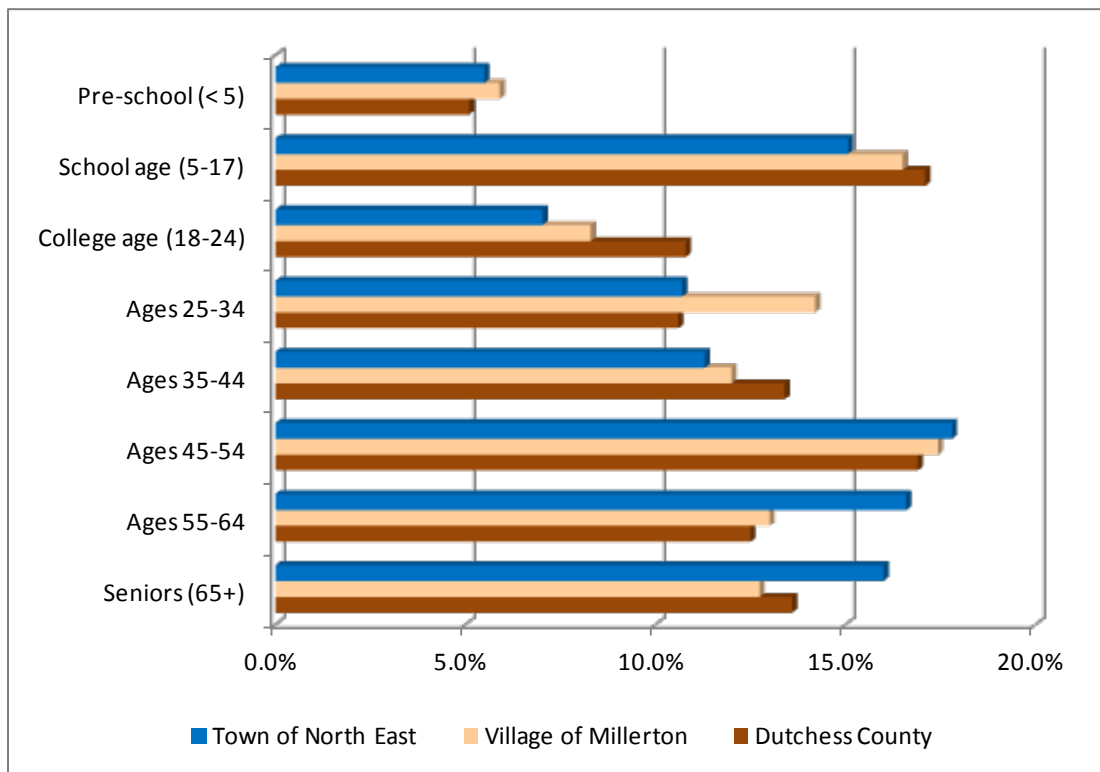
Source: U.S. Census Bureau. *Note: Virtually all of this decline was due to a loss in the number of developmentally disabled residents living at the Wassaic Development Center. These individuals accounted for 48% of the town’s population in 1970, 31% in 1980, and 23% in 1990. The residential portion of the institution was closed in 2014.

The majority of residents in the Town of North East, about 89%, are white; 2.7% are black, 1.1% are Asian, and 1.9% identify themselves as multi-racial. Individuals of Hispanic origin, who may be of any race, account for 9.1% of Town’s population.

Age Distribution

It is often useful to look at the distribution of the population by age category to assess community needs. As indicated in Figure 1 below, the Town of North East has a lower proportion of children and college-age residents, and a correspondingly higher proportion of residents age 45 and older, than Dutchess County overall. For instance, 15.1% of Town residents in 2010 were between the ages of 5 and 17, compared to 16.5% of all residents in the Village of Millerton and 17.1% of residents countywide. Conversely, 16.0% of residents in the Town, versus 13.6% of Dutchess County residents, were age 65 and over.

Figure 1. Population by Age Cohort, 2010



Population projections further suggest that the Town’s 65-and-over age cohort will continue to grow in both absolute and percentage terms, reaching 23.7% of the population by 2022. This could impact the demand for services and labor force availability in the Town. The school-age population in North East is expected to remain stable. Projected declines among the 18-24 and 25-34 age cohorts, however, may affect the establishment of new households and the long-term growth of the community.

Reflecting the age distribution of the population, the median age of the population in the Town of North East was 45.3 in 2010 (Table 3). This figure is significantly older than both Dutchess County and New York State.

DRAFT as of 2/8/18

	Town of North East	Village of Millerton	Dutchess County	New York State
2000	39.8	39.6	36.4	35.9
2010	45.3	39.2	40.2	37.9
2017 estimates	46.4	40.3	41.4	38.9
2022 projections	47.4	41.0	42.0	39.8
% Change, 2000-10	13.8%	-1.0%	10.4%	5.6%
% Change, 2010-17	2.4%	2.8%	3.0%	2.6%
% Change, 2017-22	2.2%	1.7%	1.4%	2.3%

Source: U.S. Census Bureau and ESRI (estimates and projections).

Household Composition

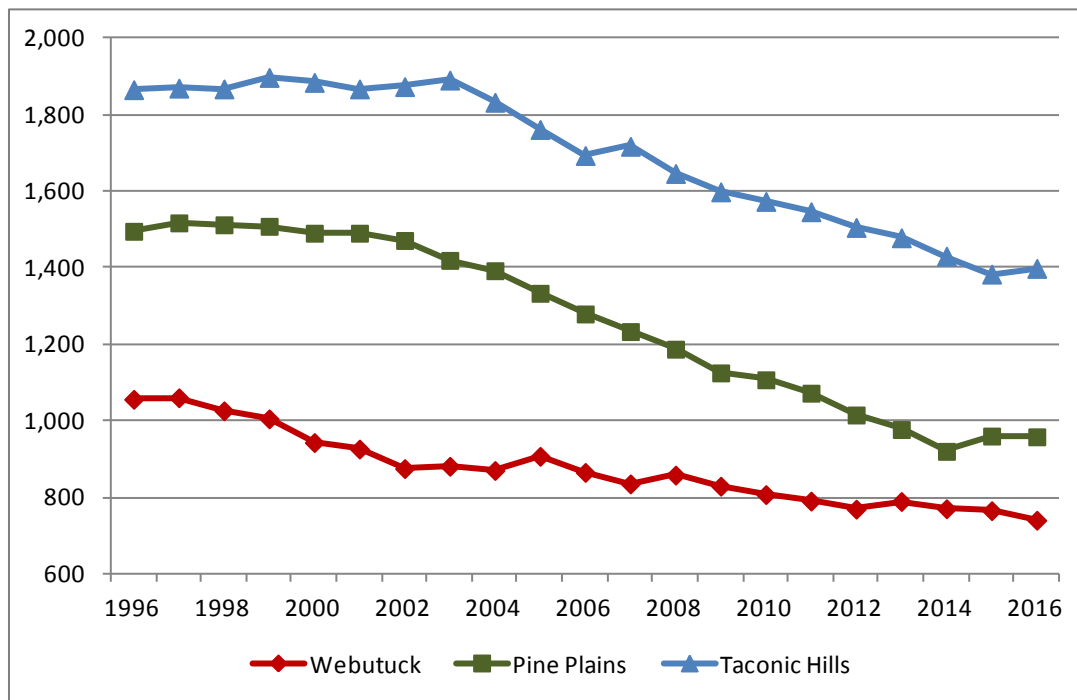
The Census Bureau defines a household as all persons who occupy a housing unit. The occupants may be a single family, one person living alone, two or more persons living together, or any other group of individuals who share living arrangements outside of an institutional setting. As shown in Table 4, there were 1,259 households in the Town of North East in 2010, a 9.9% increase from 2000. Of these, 37.0% were comprised of two people, 29.4% of one individual living alone, and 13.7% of three people. The Village of Millerton had a considerably higher proportion of smaller households, with one-third of all households made up of one person living alone.

	Town of North East		Village of Millerton		Dutchess County	
	Number	Percent	Number	Percent	Number	Percent
Single-Person Households	370	29.4%	132	33.3%	28,071	26.0%
Households with Two or More People	889	70.6%	264	66.7%	79,894	74.0%
Family Households	794	63.1%	226	57.1%	72,876	67.5%
Husband-Wife Families	616	48.9%	163	41.2%	56,034	51.9%
Other Family (No Spouse Present)	179	14.2%	63	15.9%	16,843	15.6%
Non-Family Households	94	7.5%	38	9.6%	7,018	6.5%
<i>All Households with Children</i>	327	26.0%	107	27.0%	35,736	33.1%
Total Households	1,259	100.0%	396	100.0%	107,965	100.0%

Source: U.S. Census Bureau.

Notably, 26.0% of households in the Town – compared to one-third of households in Dutchess County – had children under age 18 living at home, a reduction from 31.8% in 2000. This is a reflection of the aging population and likely contributed to declining enrollments in the Webutuck, Pine Plains, and Taconic Hills districts over the last 20 years (see Figure 2).

Figure 2. Total Enrollment by School District, 1996-2016



Nationally, average household sizes have decreased over the last few decades due to an increase in single-parent households, smaller family sizes, and more people living alone. More recently, however, the decline has started to level off. The average household size in the Town of North East was 2.39 persons in 2010 (Table 5), a slight decrease from 2.50 reported in the previous decennial census.

	Town of North East	Village of Millerton	Dutchess County	New York State
2000	2.50	2.44	2.63	2.61
2010	2.39	2.39	2.57	2.57
2017 estimates	2.39	2.40	2.58	2.59
2022 projections	2.40	2.40	2.59	2.60
% Change, 2000-10	-4.4%	-2.0%	-2.3%	-1.5%
% Change, 2010-17	0.0%	0.4%	0.4%	0.8%
% Change, 2017-22	0.4%	0.0%	0.4%	0.4%

Source: U.S. Census Bureau (2000 and 2010); ESRI (estimates and projections)

Educational Attainment

As indicated in Table 6 below, 86.0% of Town of North East residents age 25 and over have at least a high school diploma, while nearly 30% have a bachelor’s degree or higher. The Town is slightly behind Dutchess County in terms of the completion of a four-year college degree.

DRAFT as of 2/8/18

	Town of North East	Village of Millerton	Dutchess County	New York State
% with High School Diploma or Higher	86.0%	82.9%	90.1%	85.9%
% with Bachelor's Degree or Higher	29.8%	24.3%	34.0%	34.7%
% with Graduate or Professional Degree	11.2%	4.0%	15.3%	15.1%

Source: U.S. Census Bureau, 2012-16 American Community Survey 5-Year Estimates

Income

Household income levels impact the ability of residents to pay for housing, contribute to the tax base, and support the economy as consumers of goods and services. According to the 2000 Census, the median household income was \$42,038 in the Town of North East and \$36,176 in the Village of Millerton (Table 7). These figures were below the median income levels in both Dutchess County and New York State.

	Town of North East	Village of Millerton	Dutchess County	New York State
2000	\$42,038	\$36,176	\$53,086	\$43,393
2012-16 ACS *	\$62,738	\$51,250	\$72,706	\$60,741
% Change, 2000-16	49.2%	41.7%	37.0%	40.0%

Source: U.S. Census Bureau. *American Community Survey 5-Year Estimates.

Based on the most recent American Community Survey (ACS) 5-Year Estimates from the Census Bureau, the median income of households in the Town of North East has increased to \$62,738 in 2016 dollars, below the county median of \$72,706 but exceeding the statewide median of \$60,741. The median household income in neighboring towns ranges from \$58,000 in the Town of Amenia to \$82,714 in Sharon, Connecticut.

The ACS further reveals that 7.3% of all residents in the Town of North East have annual incomes below the poverty level. This is a reduction from the 12.3% poverty rate reported in the 2000 Census.